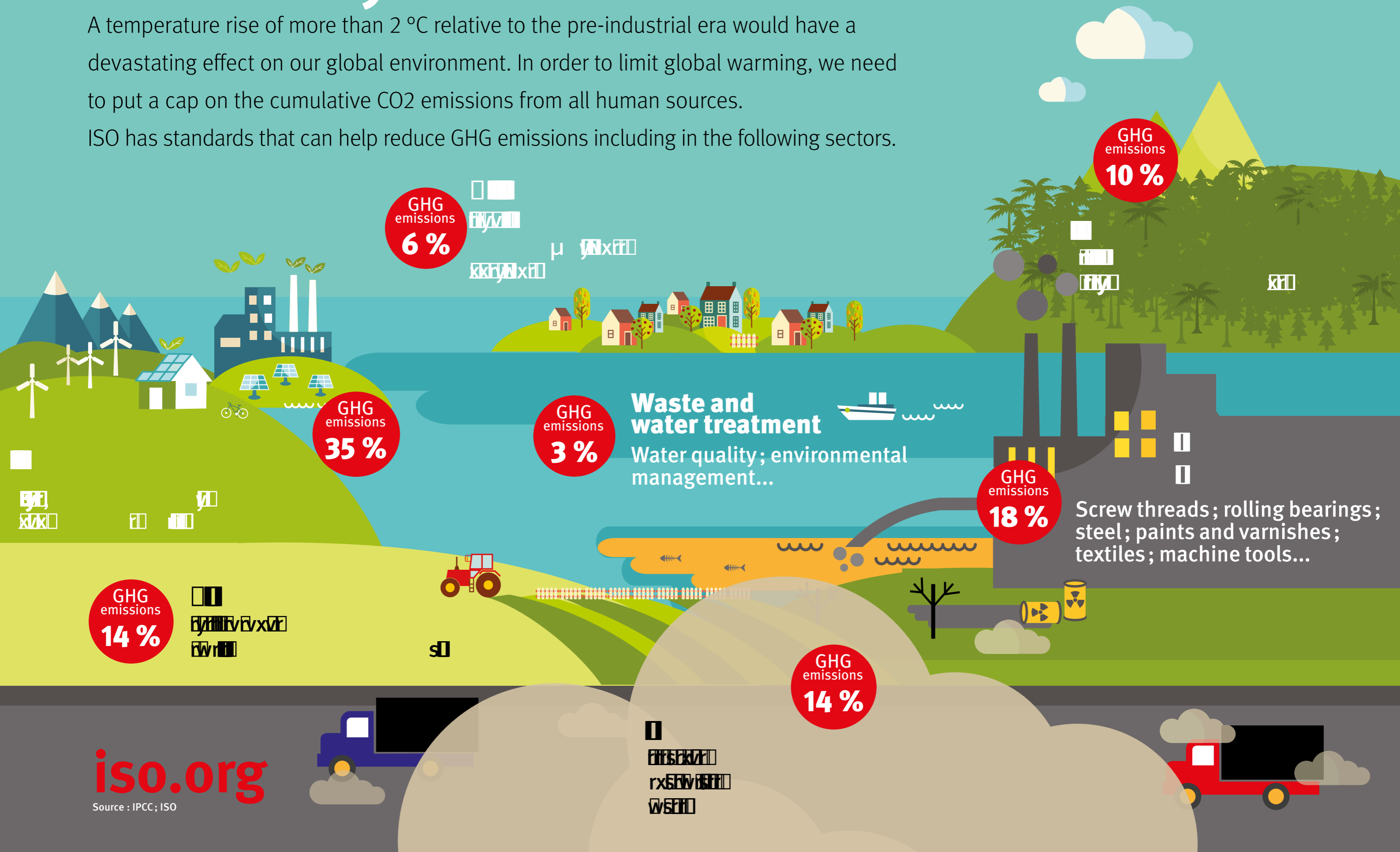




Ways to control carbon

A temperature rise of more than 2 °C relative to the pre-industrial era would have a devastating effect on our global environment. In order to limit global warming, we need to put a cap on the cumulative CO2 emissions from all human sources.

ISO has standards that can help reduce GHG emissions including in the following sectors.



GHG emissions
6 %



GHG emissions
35 %

GHG emissions
3 %

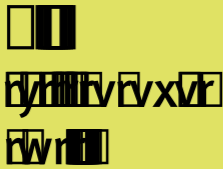
Waste and water treatment
Water quality; environmental management...

GHG emissions
18 %

Screw threads; rolling bearings; steel; paints and varnishes; textiles; machine tools...

GHG emissions
10 %

GHG emissions
14 %



GHG emissions
14 %

